

Contact Information

School Principal
Mr. Mike Gaudreau

Mailing Address
2701 Ridgewood Avenue
Sanford, Florida 32773
Telephone: 407-320-5295
Fax: 407-320-5024

CEEB Code
101-565

School Website
www.seminolehs.scps.k12.fl.us

IB Coordinator
Mary Cragar
mary_cragar@scps.k12.fl.us
407-320-5223

IB Counselor, grades 10-12
Mindi Craft
mindi_craft@scps.k12.fl.us
407-320-5224

PreIB Counselor, grade 9
Shenique Gilbert
shenique_gilbert@scps.k12.fl.us
407-320-5123

Accreditation
Southern Association of Colleges
and Schools (SACS-CASI)

School Awards
2010 Newsweek, Best High
Schools Rank: 166
5-Star School

Courses Offered:
Honors – 70
Advanced Placement – 25
International Baccalaureate - 26

SHS Class of 2011
594 seniors

IB Class of 2011
98 senior diploma candidates
9 National Merit Semifinalists
1 National Achievement
Semifinalist
8 National Merit Commended
Scholars

IB Class of 2010
97 senior diploma candidates
7 National Merit Finalists
1 National Hispanic Scholar



Seminole High School International Baccalaureate 2010-2011 School Profile

The School Community

Seminole High School is a comprehensive public high school enrolling approximately 3200 students in grades 9 through 12 located in a low socioeconomic suburban neighborhood. Our campus, originally built in 1965, is in the midst of a five-year remodel. The school offers two magnet programs, the International Baccalaureate (IB) and Academy of Health Careers, plus the traditional comprehensive high school program which offers remedial, regular, honors, gifted, and Advanced Placement classes. The school's ethnic distribution is 7% Asian, 26% Black, 14% Hispanic, 5% Multiracial, 47% White, and >1% Native American; 40% receive free or reduced lunch. Seven counselors serve the school with counselor to student ratios ranging from 1:313 to 1:507. The school is in session on a semester basis from August to June. Seven classes meet for 50 minutes each day between 7:10 a.m. to 2:10 p.m. Monday through Friday.

International Baccalaureate

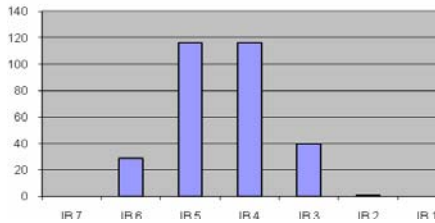
The International Baccalaureate Diploma Program is a demanding pre-university course of study that leads to examinations and designed for highly motivated secondary school students aged 16 to 19. The program has earned a reputation for rigorous assessment, helping IB diploma holders access the world's leading universities. The Diploma Program's grading system is criterion-referenced, meaning each student's performance is measured against well-defined levels of achievement. IB grades on a 1 to 7 scale, with 7 being the highest score attainable. To earn the IB Diploma a student must earn a minimum of 24 points in six subjects, complete 150 hours of outside activities (CAS), complete the Theory of Knowledge course, and write an original 4000 word research paper (extended essay). Seminole High School's IB magnet program is open to all students in Seminole County who apply by a set deadline regardless of middle school grades and test scores. We currently offer 13 IB subjects at the standard and higher level.

Group 1: Language A1	English HL
Group 2: Language B	Spanish SL, French SL
Group 3: Individuals and Societies	History of the Americas HL
Group 4: Experimental Sciences	Biology SL & HL, Chemistry HL, Physics SL
Group 5: Mathematics	Mathematics HL, Mathematics SL, Math Studies SL
Group 6: The Arts/Electives	Psychology SL/HL, Music SL/HL, Economics SL/HL, or a second science subject.

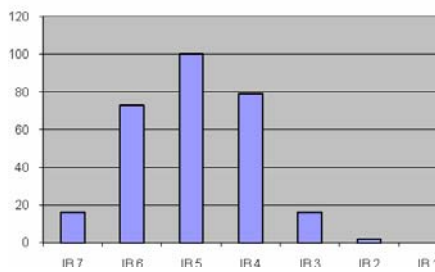
Students follow a prescribed curriculum consisting of:

Subject	Grade 9	Grade 10	Grade 11	Grade 12
Language A	Pre-IB English I	AP English Lang	AP English Lit	IB English IV
Language B	Pre-IB Spanish I/II OR Pre-IB French I/II	Pre-IB Spanish II/III OR Pre-IB French II/III	IB Spanish III or IV OR IB French III or IV	IB Spanish IV OR IB French IV
Individual & Societies	Pre-IB World Hist.	AP World History	IB Hist. of the Americas	IB Cont. History
Experimental Sciences	Pre-IB Biology I If Bio completed in 8 th grade, then AP Biology or Earth Space Sci Honors	Pre-IB Chemistry I	Select One: IB SL/HL Biology II	IB HL Biology III
			IB HL Chemistry	
Mathematics	Algebra I Honors and/or Geometry Honors or Algebra II Honors or Alg. II Competition	Geometry Honors and/or Algebra II Honors Or Precalc Competition	IB SL Physics	
			IB Math Studies	
			IB SL Mathematics	
IB Sixth Subject			Select One: IB HL Mathematics	
			IB SL/HL Economics	IB HL Economics
			IB SL/HL Psychology	IB HL Psychology
			IB SL/HL Music	IB HL Music
Electives	2 Electives	Other Electives or Physics I Honors or AP Music Theory	A second science	
			1 Elective	Theory of Knowledge

2010 SHS IB Higher Level Exam Results



2010 SHS IB Standard Level Exam Results



Seminole High School IB Profile

	09-10	08-09	07-08	06-07
Number of IB Diploma candidate seniors	97	93	81	90
Percentage of candidates who earned IB Diploma	81%	95%	80%	78%
Seminole High Average Score	31	32	31	30
National Merit Finalists	7	15	9	12
National Achievement Finalists	0	3	2	1
National Hispanic Scholars	1	6	1	1
National Merit Commended Scholars		17	n/a	18
SAT Average – Critical Reading	650	650	633	644
SAT Average – Mathematics	665	661	648	642
SAT Average – Writing	641	649	639	626
SAT Average – Total	1957	1959	1920	1912
ACT Average - Composite	28	29	26.8	26
Out of State College/University	18%	22%	17%	14%
Florida College/University	82%	68%	80%	79%
Florida Community College	0%	10%	.05%	6%

Seminole High School Profile

	09-10	08-09	07-08	06-07
Size of Senior Class	664	620	589	555
National Merit Finalists	7	15	9	12
National Achievement Finalists	0	3	2	1
National Hispanic Scholars	1	6	1	1
National Merit Commended Scholars		17	9	18
SAT Average – Critical Reading	525	521	515	524
SAT Average – Mathematics	519	520	514	517
SAT Average – Writing	504	501	494	498
SAT Average – Total	1548	1542	1523	1539
ACT Average - Composite	20.3	20.4	20.2	21.0
Number of Exams Taken*	1650	1533	1447	1207
Percentage 3 or above*	44%	42%	49%	50%
Number of Students Tested*	924	828	781	637
Out of State College/University	9%	9%	6%	9%
Florida College/University	48%	42%	39%	37%
Junior/Community College	34%	40%	45%	38%
Military	4%	4%	3%	3%
Trade School/Other	2%	2%	7%	13%

*All students who enroll in an AP class are required by school policy to take the AP exam.

Class Rank and GPA

The school's current grading system ranges from A to F. GPA and class rank are computed at the end of each semester using all credit-earning courses for all students and are based on a 4.0 scale. Class rank is determined using all courses and all students. *Designation on transcript

Letter Grade	Percent	Regular	PreIB/Hon *H	IB/AP *A
A	90-100	4.0	4.5	5.0
B	80-89	3.0	3.5	4.0
C	70-79	2.0	2.5	3.0
D	60-69	1.0	1.0	1.0
F	59 & below	0	0	0

Highest Level Courses Offered

Subject	Highest Course Offered	Additional High Level Courses Offered
English:	IB English IV	AP English Literature & Composition
Math:	IB HL Mathematics	AP Calculus AB; AP Calculus BC; AP Statistics; IB Calc & Stat
Science:	IB Chemistry III, IB Biology III, AP Physics C	AP Biology; AP Chemistry; AP Environmental Science ; AP Physics B, IB Biology II
Social Science:	IB Contemporary History, IB Psychology II	IB Economics; AP Am History; AP Macro Econ; AP Psychology; AP World History; AP Human Geography
Foreign Lang:	IB Spanish IV; IB French IV	AP Spanish Language
Fine Arts:	IB Music IV	IB Music III; AP Music Theory; AP Art History; AP Studio Art

University Matriculations Classes of 2006-2010 (One student attending unless otherwise noted)

State of Florida

- Daytona State College (2)
- Eckerd College
- Flagler College
- Florida Atlantic University (4)
- Florida Gulf Coast University
- Florida Int'l University (4)
- Florida State University (26)
- New College (4)
- Nova Southeastern University
- Ringling College (2)
- Rollins College (5)
- Sante Fe State College (3)
- Seminole State College (16)
- Stetson University (9)
- University of Central Florida (82)
- University of Florida (134)
- University of Miami (10)
- University of North Florida (4)
- University of South Florida (23)

Out-of-State

- Agnes-Scott College
- Auburn University
- Berry College
- Brigham Young University (2)
- Brock University
- Brown University (2)
- California Institute of Technology
- Carnegie Mellon University
- Case Western Reserve University
- Citadel
- Covenant College
- Dartmouth
- Duke University (8)
- George Washington University
- Georgia Tech (4)
- Grinnell
- Harvard (3)
- Indiana University
- Kenyon College
- Kings College (2)
- Liberty University
- Massachusetts Institute of Tech. (6)
- New York University (2)
- Notre Dame
- Pennsylvania State University
- Rhodes College (2)
- Savannah College of Art/Design
- Stanford University (2)
- St. John's University
- SUNY Stonybrook
- Trinity College
- US Air Force Academy
- US Naval Academy
- US Military Acad/West Point (3)
- University of Alabama
- University of Colorado
- University of Georgia
- University of Maryland
- University of Michigan
- University of New Mexico
- UNC Chapel Hill (3)
- University of Pennsylvania (3)
- University of South Carolina
- University of Texas
- Vanderbilt University (3)
- Wellesley (3)